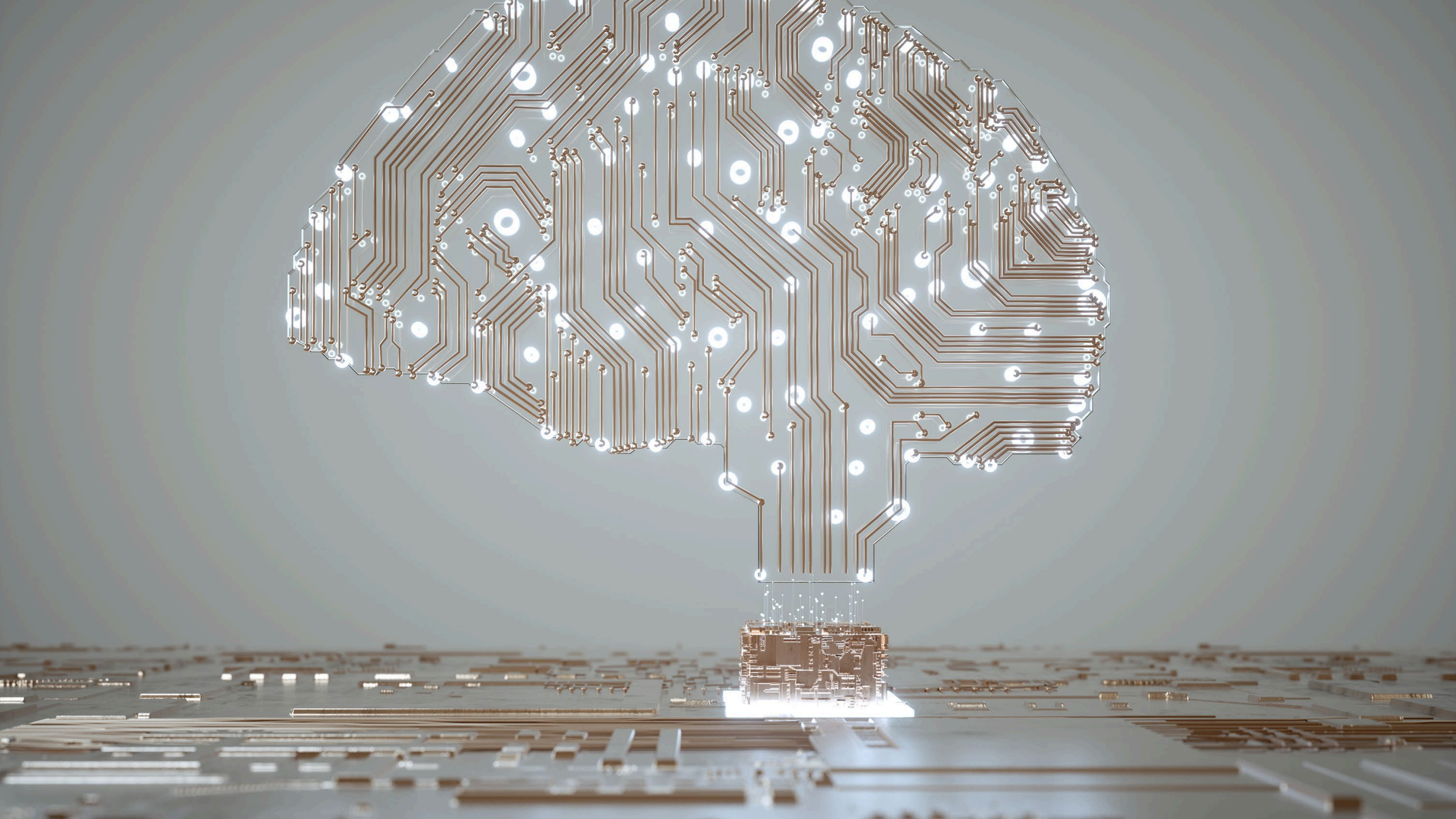


RAM XVI TRAINING SUMMIT

AI REVERSE PANEL



AI REVERSE PANEL

DISCUSSION



HUNTSVILLE
SOCIETY OF RELIABILITY ENGINEERS

Artificial Intelligence (AI) Reverse Panel

Seth Farrington, DEVCOM AvMC

Myles Chatman, DEVCOM AvMC

Ronnie Knight, Bastion Technologies

Tony Donatelli, Reliant Technologies

Purpose of AI Reverse Panel

- The objective of this reverse panel is to share questions, experiences, issues, resolutions, and paths forward that can benefit government, industry, and academia.
- The use of artificial intelligence is growing at an astronomical rate and influencing a shift towards increased automation, data-driven decision-making, and the integration of AI systems into various economic sectors and areas of life that impact the job markets, healthcare, government, industry, and academia. This raises questions about the long-term effects, ethical implications, and risks, prompting discussions about regulatory policies to ensure the safety and benefits of the technology. Traditional goals of AI research include reasoning, knowledge representation, planning, learning, natural language processing, and perception. Data scientists and AI researchers have integrated a range of techniques, including search and mathematical optimization, formal logic, artificial neural networks, and methods based on statistics, operations research, and economics.
- **The audience will be answering the questions presented by each panelist.**

Panelist Introductions

- Tony Donatelli, Reliant Technologies
- Ronnie Knight, Bastion Technologies
- Seth Farrington, DEVCOM AvMC
- Myles Chatman, DEVCOM AvMC

Poll Question 1

Join at menti.com | use code 2870 4597

 Mentimeter

How familiar are you with the applications of AI?



0%

Very familiar

0%

Somewhat familiar

0%

Not familiar at all

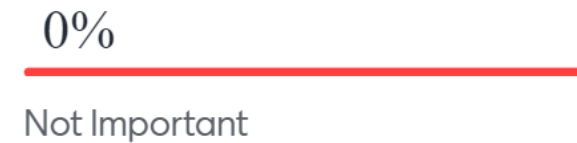


Poll Question 2

Join at menti.com | use code 2870 4597

 Mentimeter

How important is AI in improving RAM in your organization?



Poll Question 3

Join at menti.com | use code 2870 4597

 Mentimeter

What skills do you think Reliability Engineers will need to develop as AI advances?



0%

Data analysis and interpretation



0%

Programming and coding

0%

AI/ML-specific knowledge

0%

Project Management



Reverse Panel Questions

Ethical and Risk Considerations

- What are the ethical issues with using AI? (Chatman)
- What risks should we consider with increasing AI use? (Knight/ Chatman)

Trust and Decision-Making with AI

- When your AI predictions clash with traditional (human) models, which one should you trust more? What will influence your choice? (Donatelli)
- As we become more reliant on AI in reliability and maintainability engineering, how can we build in proper checks and balances to ensure that these systems provide accurate and trustworthy results? (Farrington)

Human-AI Collaboration

- AI is becoming a key technology in many business and tech areas. How can engineers and AI work together to improve engineering processes for better efficiency and capabilities that neither could achieve alone? (Farrington)

Balancing AI Predictions with Operational Realities

- How do you handle AI predictions versus a soldier's instinct to act? If an alert is "yellow", immediate action might be taken; would you rethink your predictive analysis in that case? (Donatelli)

Audience Prompted Topics



“Your Questions, Our Discussion”

In this segment, our panelists want to hear directly from you. Raise a topic or question, and our experts will dive into it based on your interests.

Key Takeaways